



Blythe Hill, London, Catford, SE6 4UJ

- Lovely quite Road
- Open plan lounge/ Diner/Kitchen
- EPC D
- Blythe Hill Fields 200 metres
- Stunning views over south London

£1,100



Blythe Hill, , London, Catford, SE6 4UJ

DESCRIPTION

This top floor flat has a kitchen-reception room overlooking the communal gardens and a view for miles looking south. The kitchen has an integrated oven, hob, sink and fridge. combined unit. The lounge area is cosy, with a sofa, storage shelf unit, table and chairs.

The bedroom is 9ft2 by 7ft2, again with window facing south. It has a double bed and a single wardrobe.

The bathroom is lovely with a white three piece suite made up of a bath with shower, counter-top basin, storage cabinet with mirror, WC and tiled floor and walls.

The communal garden below the flat has been split so that each flat has their own section to make use of and enjoy.

The property comes furnished. and is available right now.

Transport

Catford station 0.5 miles, with trains to Denmark Hill (for Kings), Blackfriars and City Thameslink

Catford Bridge station 0.6 miles, with trains to London Bridge, Cannon Street and Charing Cross.

Amenities

Catford town centre has Catford Mews 3 screen cinema, the Broadway Theatre, supermarkets and shops plus plenty of options for food and drink - – Italian (La Pizzeria Italiana), Turkish (EaTurkish, Mekan), Portuguese, Japanese (Sapporo Ichiban), Chinese, Jamaican, Thai, African, Lebanese Street Food restaurant (Fayrooz), Catford Bridge Tavern, Ninth Life and Bottle Bar.

Lewisham hospital - 1.1 mile walk through Ladywell Fields

Parks

It is 200 metres to Blythe Hill Fields, where you will find open spaces, a playground, trim trail and panoramic views towards central London and Canary Wharf to the north, and Kent and Surrey to the south.

Ladywell Fields (0.4 miles) has 54 acres of green space, with tennis courts, bowling green, cycle route and nature reserve, plus the Ravensbourne River flowing through it.

The flat would suit a single person or a professional couple. . Call Hunters in Catford to arrange your viewing.

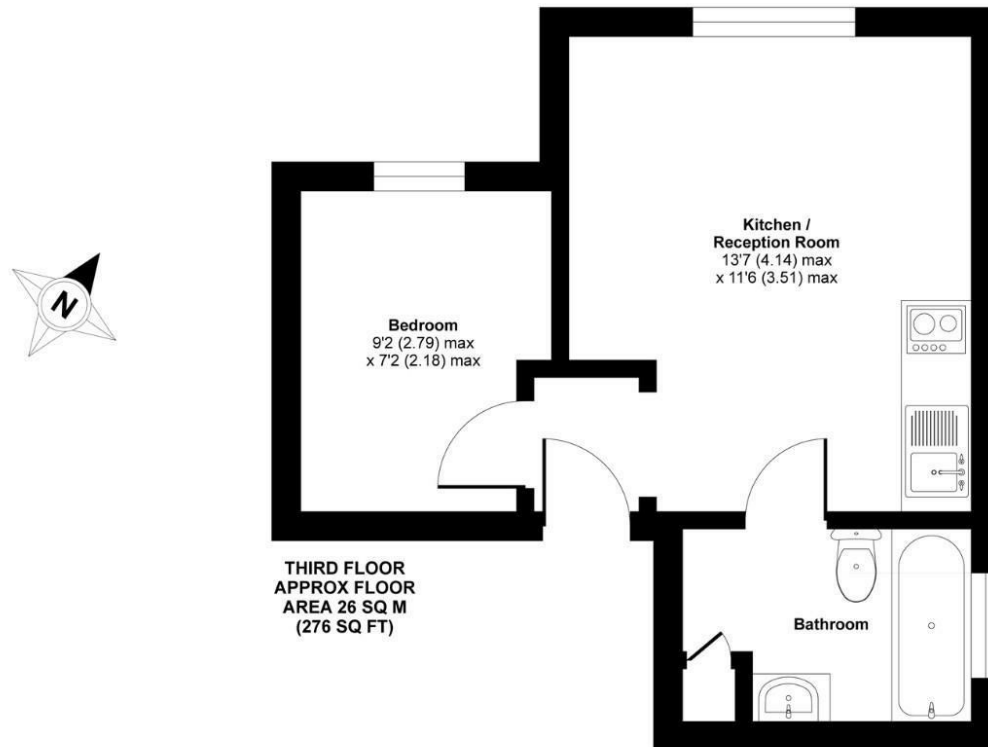




Blythe Hill, London, SE6

Approximate Area = 276 sq ft / 26 sq m

For identification only - Not to scale



 Floor plan produced in accordance with RICS Property Measurement Standards incorporating International Property Measurement Standards (IPMS2 Residential). © nichcom 2020. Produced for Hunters. REF: 642838

Viewings

Please contact catfordlettings@hunters.com, if you wish to arrange a viewing appointment for this property or require further information.

Valuations

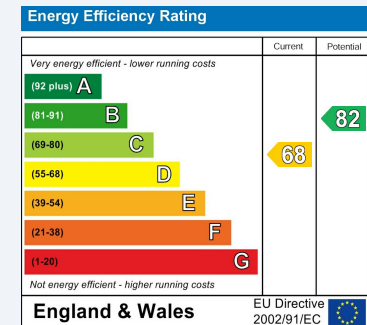
For a valuation of your property, please email the team with your property details, contact information and the times you are available.



153 Rushey Green, Catford, SE6 4BD
Tel: 02086987499 Email: catfordlettings@hunters.com <https://www.hunters.com>

ENERGY PERFORMANCE CERTIFICATE

The energy efficiency rating is a measure of the overall efficacy of a home. The higher the rating the more energy efficient the home is and the lower the fuel bills will be.



These particulars are intended to give a fair and reliable description of the property but no responsibility for any inaccuracy or error can be accepted and do not constitute an offer or contract. We have not tested any services or appliances (including central heating if fitted) referred to in these particulars and the purchasers are advised to satisfy themselves as to the working order and condition. If a property is unoccupied at any time there may be reconnection charges for any switched off/disconnected or drained services or appliances - All measurements are approximate.

THINKING OF SELLING? If you are thinking of selling your home or just curious to discover the value of your property, Hunters would be pleased to provide free, no obligation sales and marketing advice. Even if your home is outside the area covered by our local offices we can arrange a Market Appraisal through our national network of Hunters estate agents.

